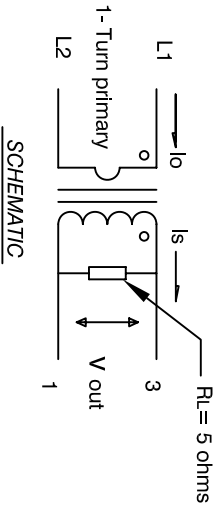


The information contained in this drawing is the sole property of CWS Coil Winding Specialist. Any reproduction in part or whole without written permission of CWS Coil Winding Specialist is prohibited.

REVISION HISTORY

REV	ECN	DESCRIPTION	BY	DATE	CHK	DATE
A		PRODUCTION RELEASE	RLU	5/25/04	JLW	5/25/04
B		CHANGE TO NEW HIGHER TEMPERATURE EPOXY	KJC	8/26/08	NN	8/26/08
B1		CHANGED TO ORIGINAL EPOXY	NN	7/30/09	AM	7/30/09
C		CORRECTION TO DESCRIPTION AS 50/60 HZ	KJC	3/14/11	JL	3/14/11



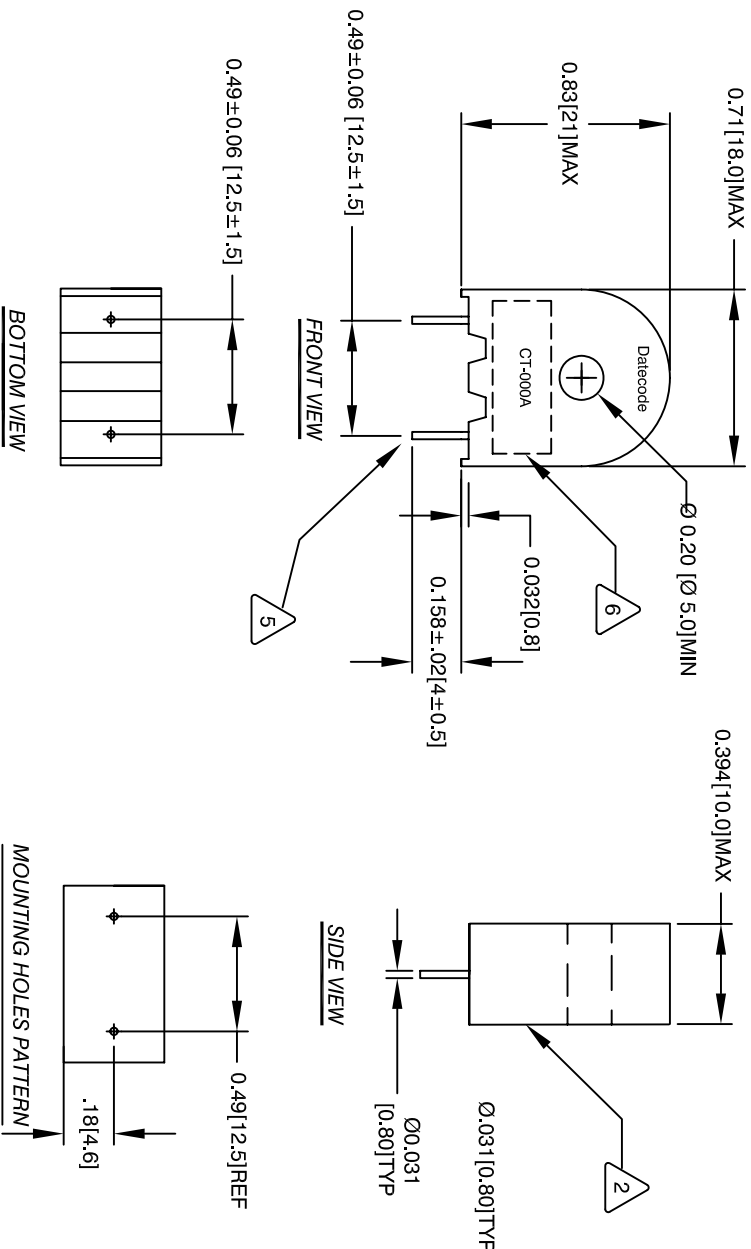
Note: The 1 - turn primary winding and the terminating resistor RL are not provided. For reference information only.

- 7 BUILT TO ROHS COMPLIANCE AND LEAD FREE.
- 6 DATE CODE WHERE SHOWN
MARK PART NUMBER, REVISION NUMBER
- 5 REMOVE INSULATION, SOLDERED TO LEADS
- 4 CONSTRUCTION: ENCAPSULATED USING BOBBIN.

- 3 HI-POT VOLTAGE = 2.5 KV/1mA
OPERATING TEMP. = -25°C TO 125°C
BURDEN RESISTOR = 5 OHMS REF
LINEARITY (ACCURACY) = 2% FROM 25 AMP TO 50 AMP
LINEARITY (ACCURACY) = 1% TO 25 AMP
DC RESISTANCE = 40 OHMS MAX
RECOMMENDED CURRENT RANGE: 0.25 AMP TO 50 AMP
PRIMARY CURRENT RATING = 25A @ 50/60 HZ
TURNS RATIO = 1000 TURNS
SPECIFICATIONS @ 25 °C:

- 2 WIRE: UL RECOGNIZED 130 °C RATED MAGNET WIRE
CWS BYTE-MARK OR OTHER APPROVED PART
CORE: TAPE WOUND

- 1 BOBBIN RATING CLASS B (130 °C) REQUIRED MATERIAL: UL RECOGNIZED 94V-0 FOR FLAMMABILITY
- NOTES: UNLESS OTHERWISE SPECIFIED, READ FROM BOTTOM UP.
ENCAPSULATED CURRENT TRANSFORMER



BOTTOM VIEW

FRONT VIEW

SIDE VIEW

MOUNTING HOLES PATTERN

QTY	CODE	MFG. P/N	DESCRIPTION	ITEM NO.
	IDENT			

PARTS LIST		MFG. P/N		DESCRIPTION		ITEM NO.	
AUTOCAD	X						
SOLIDWORKS							
DRWN	RLU	5/25/04	www.coilws.com	CWS Coil Winding Specialist,			
ENGR	KSUM	5/25/04	353 W. GROVE AVENUE	ORANGE, CA. 92665 (CAGE: 30994)			
APPR	JLW	5/25/04					

UNLESS OTHERWISE SPECIFIED	TITLE:
DIMENSIONING AND TOLERANCE PER ANSI Y14.5M	High Precision Current Sense Transformer
ALL DIMENSIONS ARE IN INCHES AND (UNLESS NOTED)	Linear from 50 Hz to 120 Hz
TOLERANCE INCHES: .XXX ± .010 .XX ± .020	Primary Current 0.25 A TO 50A @ 50/60 HZ
TOLERANCE METRIC: .XXX ± .251 .XX ± .501	
ANGLE PROJECTION	

DO NOT SCALE DRAWING	SCALE	NOT TO SCALE	SHEET	1 OF 1
	B			